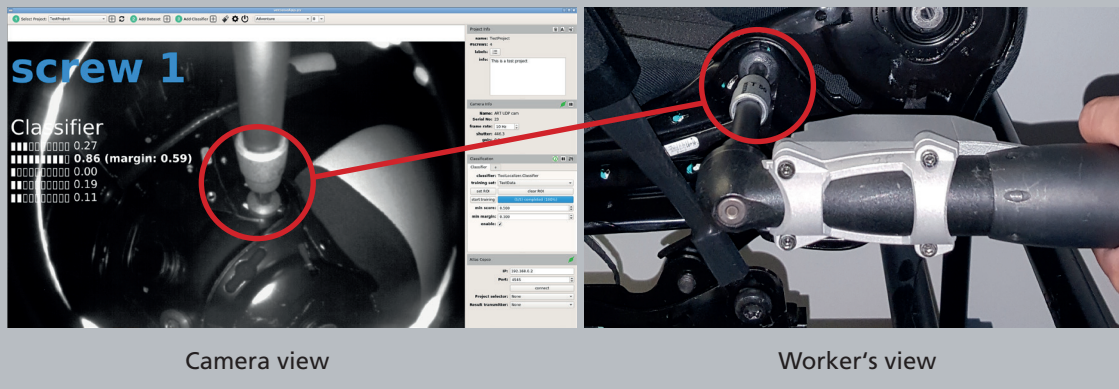


The tool is triggered in real-time



# VERPOSE®

Always the right position.

by **ART** ▶

## ▶ INTERESTED?

If you have an application scenario for introducing VERPOSE® at your location, or any other question, please contact us:

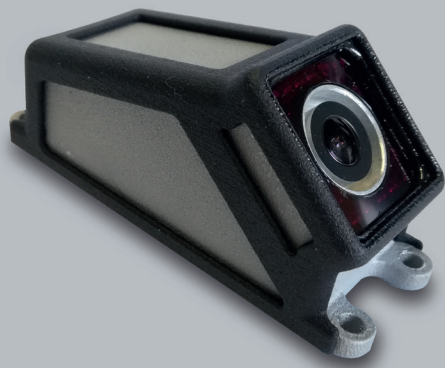
Mr. Robert BUECHER  
Mobile +49 176 - 455 712 10  
Office +49 881 - 92530 - 05  
robert.buecher@ar-tracking.de



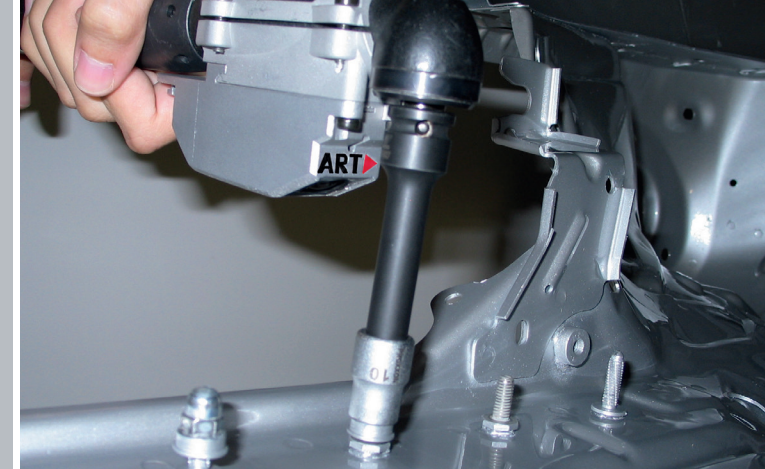
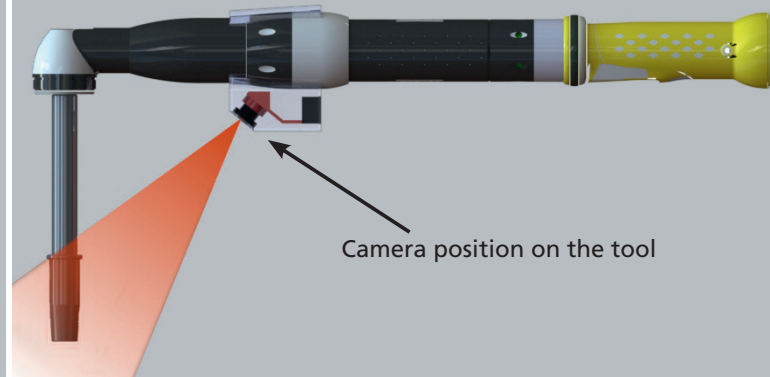
Advanced Realtime Tracking GmbH  
Am Oefel 6  
82362 Weilheim i.OB / Germany  
T +49 (0) 881 - 92530 - 00  
www.ar-tracking.de

VERPOSE® is a registered trademark of A.R.T. GmbH, Germany  
May 2019





Camera module with protection cover



## ▶ WHAT IS VERPOSE?

- ▶ VERPOSE® is a camera system\* for hand-held assembly tools (electrical screwdriver, riveting tools, clinching pliers, filling machines and other special devices).
- ▶ The camera is mounted on the tool and observes the assembly position.
- ▶ VERPOSE has an intelligent image analysis software to detect predefined assembly positions and sequences.
- ▶ Assembly positions are identified and evaluated.

## ▶ FIELDS OF APPLICATION

- ▶ VERPOSE is optimally suited for series assembly.
- ▶ It ensures the correct tool positioning in assembly processes.
- ▶ VERPOSE can be used to release and document assembly steps.
- ▶ Compliance with given assembly sequences can be assured.
- ▶ VERPOSE enables faster training success in assembly.

## ▶ ACHIEVABLE BENEFITS (e.g. in connection with the production control system)

- ▶ Reliable real-time acquisition with high detection rates.
- ▶ The tool control releases only in the correct mounting position.
- ▶ Assembly parameters (e.g. torque, angle) can be activated in a position-specific manner.
- ▶ Each worker can assemble in their specific order - without loss of quality.
- ▶ Prevention of defects and thus greater flexibility of time for the worker.
- ▶ The test setup is straightforward.
- ▶ Quick and easy training in minutes.
- ▶ The modular system can be adapted to a wide range of industrial requirements.
- ▶ Improved process assurance and cost savings through:
  - ▶ Higher process reliability and minimisation of errors in the assembly process.
  - ▶ Securing the assembly steps with intelligent, automated image recognition.
  - ▶ Reduction of rework rate.
- ▶ Camera fixation directly on the tool allows:
  - ▶ Minimisation of occlusions.
  - ▶ Absence of external sensors and cumbersome structures in the production hall.
  - ▶ Quick and easy change of positions.

\*A system consists of a camera with tool adapter, ART Controller plus VERPOSE® software.